



www.resexpo.com

VU Case Rentals

Please Mail, Email or Fax Completed Form to RES:

9291 West Bryn Mawr, Rosemont, IL 60018
Email: customerservice@rosemontexpo.com
Fax: 847-696-9797 • Phone: 847-696-2208

iPBS 2018
April 24-26, 2018

Deadline To Receive Discounted Rates:
April 6, 2018

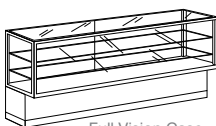
VISION CASE

Full Vision Case Includes
1-8" and 1-10" glass shelf with adjustable brackets, 26" high front glass display section

1/2 Vision Case Includes
1-10" glass shelf with adjustable brackets, 18" high front glass display section

1/4 Vision Case Includes
12" high front glass display section

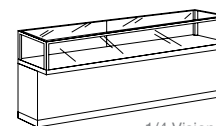
| | QTY. | DISCOUNT | STANDARD | TOTAL |
|------------------------|-------|----------|----------|----------|
| 5 ft. Full Vision Case | _____ | \$425.00 | \$475.00 | \$ _____ |
| 6 ft. Full Vision Case | _____ | \$450.00 | \$500.00 | \$ _____ |
| 5 ft. 1/2 Vision Case | _____ | \$400.00 | \$450.00 | \$ _____ |
| 6 ft. 1/2 Vision Case | _____ | \$425.00 | \$475.00 | \$ _____ |
| 5 ft. 1/4 Vision Case | _____ | \$400.00 | \$450.00 | \$ _____ |
| 6 ft. 1/4 Vision Case | _____ | \$425.00 | \$475.00 | \$ _____ |



Full Vision Case



1/2 Vision Case



1/4 Vision Case

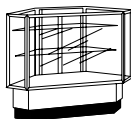
CORNER VISION CASE

Full Corner Vision Case Includes
1-8" and 1-10" glass shelf with adjustable brackets, 26" high front glass display section

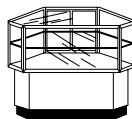
1/2 Corner Vision Case Includes
1-10" glass shelf with adjustable brackets, 18" high front glass display section

1/4 Corner Vision Case Includes
12" high front glass display section

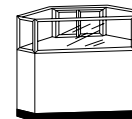
| | QTY. | DISCOUNT | STANDARD | TOTAL |
|-------------------------|-------|----------|----------|----------|
| Full Corner Vision Case | _____ | \$425.00 | \$475.00 | \$ _____ |
| 1/2 Corner Vision Case | _____ | \$400.00 | \$450.00 | \$ _____ |
| 1/4 Corner Vision Case | _____ | \$400.00 | \$450.00 | \$ _____ |



Full Corner Vision Case



1/2 Corner Vision Case



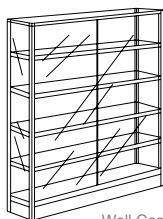
1/4 Corner Vision Case

WALL & TOWER CASE

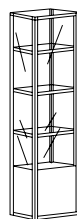
Wall Case Includes
48"L x 20"D x 66"H, with 4-12" glass shelves, adjustable brackets, lights, locks and 60" high sliding glass doors

Tower Case Includes
20"L x 20"D x 80"H, with 3 glass shelves, lights and locks

| | QTY. | DISCOUNT | STANDARD | TOTAL |
|--------------------|-------|----------|----------|----------|
| Solid Wall Case | _____ | \$500.00 | \$550.00 | \$ _____ |
| See-Thru Wall Case | _____ | \$475.00 | \$525.00 | \$ _____ |
| Tower Case | _____ | \$500.00 | \$550.00 | \$ _____ |



Wall Case



Tower Case

ORDER TOTAL \$ _____

ADDITIONAL INFORMATION

- All showcases are 20" D x 38" H, have lights, locks, sliding mirror doors, grey exterior, off-white interior aluminum frames.
- 4' showcases available upon request. (limited quantities)
- Electrical hook-up is not included. Please order the outlet from electrical contractor.
- A \$50.00 charge per showcase for late orders and changes made at show site.
- All keys must be left with showcase or a charge of \$10.00 will be assessed.
- A \$20.00 charge per additional shelf or size change of shelf.

Company Name: _____ Phone #: _____ Fax #: _____

Address: _____ City: _____ State: _____ Zip: _____

Authorized By (print): _____ Signature: _____ Booth #: _____

Order Summary and Payment Sheet MUST accompany this order. All terms and conditions as outlined on the Order Summary and Payment Sheet have been reviewed and understood.

RES Address: 9291 West Bryn Mawr, Rosemont, IL 60018 • RES Telephone: 847-696-2208 • RES Fax: 847-696-9797